

WINSLOW HERITAGE SOCIETY

AMAZING!

by Kathy Myers

The members of the Winslow Heritage Society are an interesting and diverse group of people. It has been my great pleasure to meet so many cousins over these last few years of the Society's existence. What started as an idea after the GSMD Congress in 2011 became a reality through the dedication of our volunteers and the interest of the descendants of our common ancestors, Edward and Magdalene Oliver Winslow of Droitwich, England.

One of our Charter Members, Gordon Winslow, has spent a lifetime researching the Winslow name and lines. At some point he undertook the challenge of contacting as many of the descendants of our Droitwich ancestors as he could locate. Initially, his method, as I understand it, was to search the Winslow name in telephone books around the country. Sending out inquiries, some answered him. Through this method, he was led to more family members including those who do not share the surname but are, nonetheless, Winslow descendants. Below is wording from one such inquiry:

“Dear Friend of Relative: I am compiling the names and the biography of the entire WINSLOW family, looking toward the possible publication of the same at some future date when a record approaching some degree of perfection has been obtained. This work is being undertaken with no spirit of money making but with a deep and sincere interest in knowing the WINSLOW lineage and numerous relatives throughout the country and the world.

It would be deeply appreciated if you would fill out the pedigree outlined on this sheet, as completely as you can, and return the same to me. If you can trace your WINSLOW ancestry farther back than what I am asking, please continue your ancestry on the reverse of this sheet. Any added information concerning the lives and accomplishments of the members of the family would also be greatly appreciated. If you have more than enough material to go on this sheet, use another sheet of paper.

Thanking you for your kindly interest and cooperation in this matter, I am

Very respectfully yours,”

Gordon W. Winslow, Jr.

In a time before personal computers, Gordon painstakingly developed a data base of sorts, folders with correspondence from those who responded, names carefully noted on index cards, in some instances names cross-referenced, and placed alphabetically in file boxes with a number corresponding to a number on the file folder.

Shortly after the first of the year, I received a phone call from Gordon. He talked to me about the research he had compiled and to my surprise, asked if I might like to receive his records. Being the historian/genealogist that I am, I realized what a fascinating study this could present and immediately

said. “Yes”. On January 24 a package arrived at my home, so large that I had to rely on my husband to carry it into the house.

Below are statistics I have gleaned to date from the files that Gordon provided:

File folders number from 1 to 1,949; each response was given an index number, a card was inserted into a card file, and the information received placed in a folder. As an example, in the A card file alone, there were 82 responses from those carrying the Winslow surname. A card file was also developed for those in the family who do not carry the surname. Responses were from far and wide. Noting a letter in one file dated 1968, the respondent noted a date of birth as 1892 in Kentucky.

An index card for one of my distant Winslow cousins residing in Punxsutawney, PA, shows a letter sent from Gordon dated 1964, with follow-up information provided by the Winslow cousin in 1965. The index card reveals correspondence between the two continued through January, 1970. The cousin also included a collectible sketch of an historic Winslow home that still stands today in the “Weather Capital of the World”. Another file that caught my attention was opened for my father’s first cousin who was living in Clearfield, Pennsylvania, dated November, 1964.

Included in one folder is correspondence from Peter and Valerie Rimell who were the owners of Kerswell Green Farm, the Kenelm Winslow homestead, for many years. It appears Gordon had established a warm and friendly relationship with them. They were good stewards of that property.

I am pleased to say that in an upcoming issue of the newsletter, Gordon’s daughter and WHS member, Susan Winslow Garcia, has graciously agreed to write about her father’s research. This is an amazing collection. I am looking forward to learning what this collection will reveal about our Winslow family history.



NEW MEMBERS

THERESA MARCHETTI, descendant of John Winslow
KRISTEN ANN (WILKIE) McTEAGUE, descendant of Kenelm Winslow
JAMES ANTHONY WINSLOW, descendant of Kenelm Winslow
JANINA JARUZELSKI, descendant of John Winslow



The Winslow Heritage Society is very pleased to announce that Craig Failor, a descendant of Kenelm Winslow, has accepted the position of Historian/Genealogist. Welcome, Craig! Craig can be reached at craig.failor@comcast.net

WARWICK CASTLE

BY Kathy Myers

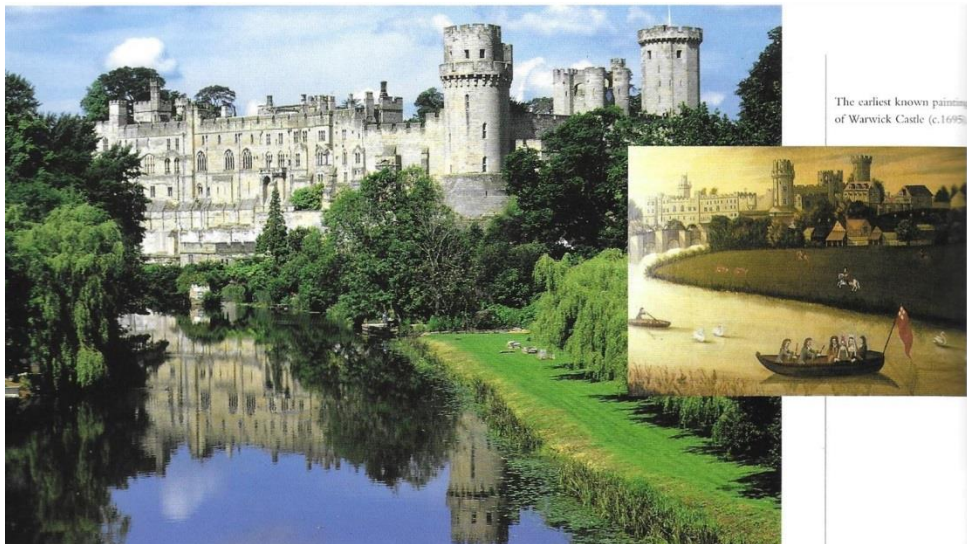


Photo of Warwick Castle and earliest known painting (c. 1695) as it appears in the publication, "Warwick Castle, A Thousand Years of History in Your Hands"

What does Warwick Castle have to do with the Winslow family? A good question, especially to those who espouse the Winslow Royal Line philosophy.

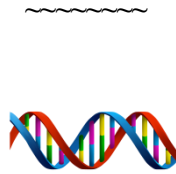
I have visited Warwick Castle and found it very interesting. According to the guide book, cited above,

"The origins of the castle can be traced back to the Saxon fortification which Ethelfleda, daughter of Alfred the Great, used to defend against the invading Danes. The first castle to appear on the site was a wooden Motte and Bailey constructed in 1068 at the command of William the Conqueror. Throughout the Middle Ages, under successive Earls of Warwick, the Castle was gradually rebuilt in stone. By the 14th century, it was a towering Medieval fortress and the stronghold of the mighty Beauchamp family. Later as the castle declined in military importance, the main living quarters were converted into a residence of rich and sumptuous style that reflected the wealth and status of its owners. Attacked in 1264, besieged in 1642, and damaged by fire in 1871, the Castle has nevertheless gloriously survived the ever-changing fortunes of history and stands today as the most impressive of England's ancient fortresses. The castle was home to the Earls of Warwick until 1978 when it was bought by the Tussauds Group. Since then extensive restoration work has been carried out and substantial areas of the castle, which were previously closed to the public, have been opened."

Several years ago, at the encouragement of some distant cousins, I attempted to join a group known as the Baronial Order of Magna Charta of which they were members. Imagine my surprise, after filling out the application based on what I had been told about the Winslow Royal Line, that I was turned down for membership. It seems that the royal line theory was based on research published in "The American Genealogist" that Kenelm Bucke of Kempsey had a daughter, Mary Bucke who may have married William Winslow. Kenelm Bucke supposedly married Ellen Neville, daughter of Thomas Neville (1468-1546) of Shenstone, Staffordshire. This Thomas Neville was said to be the son of Sir Henry Neville who died at the Battle of Edgecote 1469 and his wife, Joan Bouchier (Bourgchier). Henry Neville died during

the lifetime of his father, George Neville, Lord Latimer. When Henry Neville's surviving wife, Joan Bouchier died, she named only one child in her will, an infant known as Richard Neville, Lord Latimer, who was one year old when his grandfather, George Neville died. There was no son, Thomas. It is a theory that has continued among many Winslow descendants.

Interestingly, Henry Neville, through his mother, Elizabeth De Beauchamp, of the mighty family that once held Warwick Castle, the stronghold of Beauchamp family, traced a line back to Roger II Bigod of Norfolk and Suffolk, who was won over by the rebel Barons in opposition to the king and became one of the strongest advocates of the Charter of Liberty, known to us as the Magna Charta. A relationship to this family qualifies for membership in the Baronial Order of Magna Charta.



Deputy Governor's Corner
Judy Quinn – Winslow DNA Project
Co - Administrator

May 2020

I have some exciting news to report to our WHS members. I am announcing the addition of Raymond Wing as the new Administrator of the Winslow DNA Project at Family Tree. I will continue on as co-administer along with Ray.

Ray has extensive experience being involved with genetic genealogy for the past 20 plus years and has taken a keen interest in identifying the Y-DNA and mtDNA signature of Mayflower passengers and their wives through their living descendants. He is an active contributor to the MayflowerDNA.org wiki which directly works on this subject matter. The wiki has a section devoted to the Mayflower Winslow family at:

[https://mayflowerdna.org/wiki/index.php/Winslow_\(Y-DNA\)](https://mayflowerdna.org/wiki/index.php/Winslow_(Y-DNA)) And he has just created a wiki page for the mtDNA descendants of the Mayflower Chilton family at:

[https://mayflowerdna.org/wiki/index.php/\(poss.\)_Susanna_\(Unknown\)_ \(mtDNA\)](https://mayflowerdna.org/wiki/index.php/(poss.)_Susanna_(Unknown)_ (mtDNA))

Other areas of Ray's expertise include:

Administrator - Wing surname Y-DNA Project (FTDNA)

Co-administrator - Howland surname Y-DNA Project (FTDNA)

Co-administrator - R1b-U106 Haplogroup Y-DNA Project (FTDNA)

Ray has begun to document the y-DNA descendants of the Winslow brothers at Ancestry.com along with the mtDNA descendants of Mary Chilton. I will be assisting him in his efforts as an editor.

Some of you have already been contacted by me regarding your wish to include your own lineage into this historic research. This is tedious, time consuming work. Eventually I'm hoping to contact each of you. If you choose to participate I'll be asking for your lineage including spouses with birth and death dates.

On another note, our Winslow DNA Project at Family Tree has 112 members and growing. It's

never too late to test either at Family tree or if you have tested elsewhere, upload your results to <https://www.familytree.com> and follow the instructions. Choose the Winslow Project and any other projects you are interested in.

Without going into any great detail there is now scientific evidence to support a conclusion that the direct line male ancestor of the Winslow family may have been a Viking. That coincides with all the current paper documentation and the information provided to you on the WHS website. Several male individuals have completed advanced SNP testing which is more reliable in determining closeness of a relationship than STR testing (yDNA 37, 67, 11 markers). We currently have one individual who has completed the old BIG Y 500 test (with mutations every 4-6 generations) and we have an individual who is a member of the Mayflower DNA Project as well as the Winslow DNA Project and one other person, who have both completed Big Y 700 tests (with mutations every 2-3 generations). Of the three tests – one is a descendant of Governor Edward Winslow while the other two descend from his younger brother Kenelm. **We are actively searching for a direct line male descendant of John Winslow, brother of Edward and Kenelm as well as direct male descendants of Kenelm’s three sons, Kenelm II, Nathaniel and Job.** We are encouraging male members in the different subgroups to do more advanced SNP testing (Big Y700). This will allow us to compare mutations and be able to define a clade unique to the Winslow family upon receiving the results of these tests.

The Mayflower DNA Project is continuing to gather information on member autosomal tests as well and encourage members to share their pedigrees in the Mayflower DNA Project. They have identified the following direct female lineages of just a few Mayflower passengers.

They are as follows along with their Haplo group: Elizabeth Warren, H1j; Hester Cooke, J1c2; Joan Tilley, H1a1; Judith White, H6a1b2a; Mary Chilton, T2b; Mary Allerton, W5a2; Mary Hopkins, V; Priscilla Alden, H6a1a9; and Elizabeth Hopkins, H27. At this time Haplogroups are not known for Mary Browne, Christian More, Faith Doty, Ann Samson, Mary Brewster, Mary Soule, Alice Bradford and Katherine Hopkins.

The research continues.

Judy Quinn can be reached at judyq47@yahoo.com

#####

IN MEMORIAM

“To everything there is a season, and a time to every purpose under the heaven. A time to be born, and a time to die...Ecclesiastes 3:11



MARY WISLEY BARRE’ of Baton Rouge, LA, died November 29, 2019. 89 years of age, she was born in Findlay Ohio. A graduate of Findlay Senior High School, she attended Mt. Holyoke College, South Hadley, MA, and the University of Michigan, Ann Arbor. She is survived by her beloved husband, Charles H. Barre’, a brother, 4 children; 1 step-son; 8 grandchildren; and 7 great grandchildren. Mary was a member of the General Society of Mayflower Descendants, the DAR, and a member of the Winslow Heritage Society as a descendant of William White.

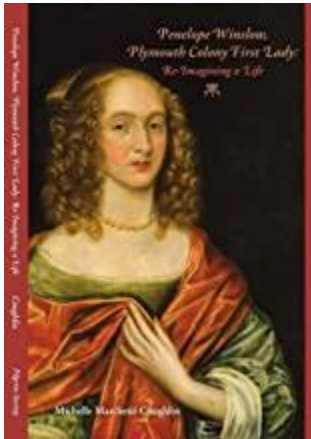


Pictured: Robert White along with his grandson, Devin White, a WHS Junior Member; and son, John White, past WHS Secretary and past WHS Historian

ROBERT F. “BOB” WHITE, Sr., 79, of Pelham, New Hampshire passed away peacefully at his son John’s home, on January 11, 2020. Born in Lowell, MA, a son of the late Roland E. and the late Josephine (Riley) White, he was an 11th generation Mayflower descendant. Bob attended Brighton schools and was a graduate of Brighton High School. A veteran of the U.S. Army, Bob proudly served his country during the Vietnam War. Prior to his retirement he was a mail handler for the U. S. Postal Service for over 38 years in Boston.

A passionate historian, Bob was a member of the General Society of Mayflower descendants and of the Winslow Heritage Society as a descendant of John Winslow.

Bob is survived by two sons; a daughter; five grandchildren; two great grandchildren; a brother; and his beloved cat, Ginger.

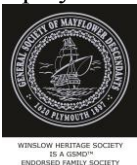


New Book Available: “PENELOPE WINSLOW, PLYMOUTH COLONY FIRST LADY, RE-IMAGINING A LIFE,” by Michelle Marchetti Coughlin, available through Pilgrim Hall Museum and on [amazon.com](https://www.amazon.com)

Additional information can be found at Michelle’s website, www.onecolonialwomansworld.com

Winslow Heritage Society News

While we are all disappointed that the GSMD Congress scheduled for September and the many activities commemorating the 400th anniversary of the sailing of the Mayflower have been postponed, we remain thoughtful about our Mayflower and Great Migration ancestors. In that vein, Winslow Heritage Society has renewed its Family Society Partnership Program with GSMD for another year. Through this membership, the Society is promoted through GSMD’s public relations and marketing efforts; shares space on the GSMD’s website featuring family societies; receives designated meeting space during Congress week; is listed under Family Societies in the Mayflower Quarterly; and is granted permission to display the GSMD Family Society insignia on our website.



Nominating Committee

In the upcoming August newsletter, the Nominating Committee will be presenting the proposed names of the Board and Committees for a three year term of office to begin September 2020. Currently the committee is seeking nominations for Newsletter Chair and Membership Chair. If anyone is interested in one of these positions or knows someone who may be, please contact either Judy Quinn at judyq47@yahoo.com or Bruce Fensley at b0408fensley@gmail.com



Below are two letters recently received from the General Society of Mayflower Descendants regarding the Garden Walkway project, and another regarding the Meetinghouse Project for which donations were approved at the WHS Annual Meeting in October, 2019.



3/10/2020

Winslow Heritage Society
 Kathy Myers, Governor
 2540 Beechtree Rd
 Falls Creek, PA 15840-3810

Dear Kathy,

Thank you for your donation of \$150 to the General Society of Mayflower Descendants Garden Walkway Project. Your support helps ensure that the garden and grounds of the Mayflower Society House in Plymouth will remain a place of beauty where our ancestors will be honored and remembered.

Name for acknowledgement:

Winslow Heritage Society

Your commemorative brick will read:

WINSLOW HERITAGE
 SOCIETY 2020

Please double-check this wording for accuracy of spelling and lettering. If you are satisfied with the inscription and the acknowledgment, there is no further action required. If you have a revision, please email at executiveasst@themayflowersociety.org or call 508.746.3188 ext. 25.

You will receive notification when your brick has been installed in the Walkway. Again, we want to express our appreciation for your participation in the Mayflower Society Garden Walkway Project, and hope that you will plan a visit to Plymouth to view your brick in person.

Best wishes,

George P. Garmany, Jr. MD
 Governor General

This letter can serve as a receipt for your tax records, as the Mayflower Society is a 501(c)3 non-profit organization and is thereby eligible to receive tax-deductible gifts under the Internal Revenue Code. No goods or services were received in exchange for your donation.

General Society of Mayflower Descendants • The Mayflower Society
 Headquarters: 4 Winslow Street, Plymouth MA • PO Box 3297, Plymouth MA 02361
 TheMayflowerSociety.org • 508.746.3188



3/10/2020

Winslow Heritage Society
Kathy Myers Governor
2540 Beechtree Rd
Falls Creek, PA 15840-3810

Dear Kathy,

Thank you for your organization's generous designated contribution of \$100 to the National Pilgrim Memorial Meetinghouse (NPMM). Because we have worked together, we are now well on our way to restoring and preserving this American treasure.

Do you believe in divine intervention? I'm not sure what else to call what has transpired in the past months regarding the NPMM. Many have expressed to me that they felt a divine presence at the 2016 September General Board of Assistants meeting in Indianapolis when we began discussing the possibility of saving the Meetinghouse.

Then, in 2017 at Congress, the discussion became a decision and we voted that if we could raise \$3,000,000 by September of 2020, we would accept the donation of the Meetinghouse. That's where the divine intervention really comes in. First, a grant for \$2,618,000 was approved by Plymouth's Community Preservation Act fund that will restore the exterior of the building. We were well on our way to collecting the \$3,000,000 with only \$382,000 remaining.

The town of Plymouth put a condition on giving GSMD the grant. The society had to be sole owner of the Meetinghouse before they would release the grant money. Because of the deterioration of the building, our plans had to be fast-tracked. Letters were sent to our Member Societies, our members, and friends, and by the end of 2018, the money was raised!

On December 9, 2018, the First Parish Church in Plymouth transferred the deed in a tearful ceremony saying they were crying for sadness at losing the building and for happiness that it would be saved by GSMD. Our Trust representatives and Executive Committee members in attendance shed a few tears as well.

As we all look back on the 2020 commemoration, it will be the Meetinghouse that first comes to mind. That is the legacy that will be left behind to remember the 400th anniversary of the Mayflower voyage. I am proud to be a part of what is likely the biggest challenge that GSMD has ever faced. We belong to a generation that saw a need, and a responsibility to tell the Mayflower story, and acted on it. For so many parts and pieces to come together at the same time may not be coincidence. Maybe it is divine intervention.

Today, a new challenge is upon us. We now must raise another \$8,000,000 to restore and preserve the interior of the Meetinghouse and begin operating it to tell the Mayflower story. As we apply for grants, there is often a requirement that similar organizations support the project as well. Your donation is making it possible for GSMD to receive those grants.

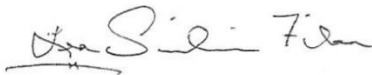
We are grateful for your support and you can see your organization's name online on our donation page and throughout our publications. As the Meetinghouse is restored, donors will appear there as well.

Watch for updates at themayflowersociety.org under 'News and Events' on our blog as well as in the *Mayflower Quarterly Magazine*. Sign up at the top of the home page of the site for email updates and we'll keep you informed about the Meetinghouse and all of the 2020 projects being planned.

If you have questions about the many ways you can give to the Meetinghouse appeal, please call Executive Director Susan Belekewicz at 508-746-3188 or email her at executivedirector@themayflowersociety.org. Please feel free to contact me at any time as well. My information is below my signature.

Again, thank you to your members and for your leadership and willingness to give to the Meetinghouse. You are setting an example that others will follow.

With much appreciation,



Lea Sinclair Filson, Meetinghouse Fundraising Chair
Former Governor General, GSMD
fggfilson@themayflowersociety.org
504-491-5330
www.themayflowersociety.org

The General Society of Mayflower Descendants is a tax-exempt organization as described in Section 501(c)(3) of the Internal Revenue Code. Our tax identification number is 82-5178134. Your gift is fully tax-deductible as no goods or services have been provided to you in exchange for your gift. Please retain this letter for your tax records. It serves as a receipt for your gift.